

2012-13 Annual Report

# Historic Preservation Program

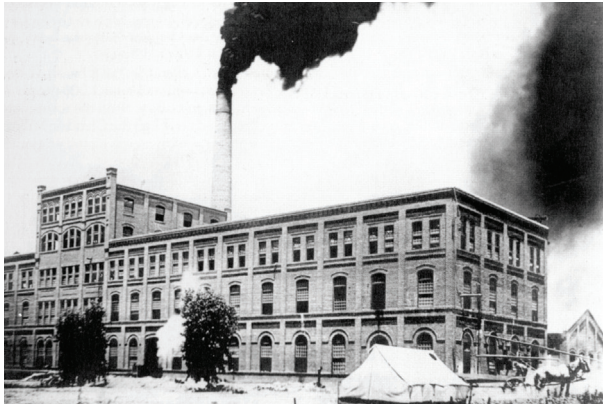
Prepared by City of Glendale Planning Division



*The Glendale City Council adopted a Historic Preservation Plan and Ordinance in 1992 and formed the Historic Preservation Commission in 1993. The Commission's purpose is to advise the Planning Commission and City Council on historic preservation issues, including designation of historic properties on the national, state, and Glendale registers for historic places, and develop awareness and support for historic preservation. The Historic Preservation Commission is supported by the Planning Division. The Historic Preservation Officer is Jon M. Froke, M.Ed., AICP, who also serves as the Planning Director for the City of Glendale.*







**A SUMMARY OF HISTORIC PRESERVATION ACTIVITIES IS NOTED BELOW:**

**I. BEET SUGAR FACTORY  
5243 WEST GLENDALE AVENUE.**

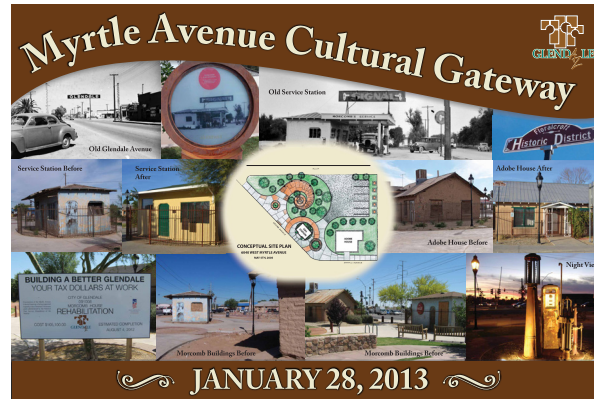
On December of 2012 Planning Staff meet with the property owner of the Beet Sugar Factory, Sugar Aspirations, LLC, to discuss future plans and upgrades to this historic property that was built in 1906. The new tenant will be Forward Brands which plans to open a distillery on the ground floor. Restoration of the site will include a distillery on a portion of the first floor, new landscaping along 52nd Avenue, façade improvements and repairs, six new parking spaces, and a small office for employee use.



**II. HISTORIC PRESERVATION COMMISSION.**

Held a meeting on January 24, 2013 and discussed three agenda items:

- a) The current status of the Beet Sugar Factory located at 5243 West Glendale Avenue.
- b) The latest news about the Myrtle Avenue Cultural Gateway located at 6040 West Myrtle Avenue.
- c) An update about the Bronze Plaque Program that is city-wide.



**III. MYRTLE AVENUE CULTURAL GATEWAY  
6040 WEST MYRTLE AVENUE.**

On January 28, 2013 Planning held the Ribbon Cutting ceremonies on-site for the completion of this important gateway into Historic Downtown Glendale. The Mayor & Council cut the ribbon to officially open this project after nine years of planning and acquisition and final construction that commenced in 2012. The project includes two buildings, located at Grand and Myrtle Avenues, and is part of a renovation project funded by a grant from the U.S. Department of Interior.

The city has been restoring this area since 2006. The improvements completed in 2012 involved exterior and interior restoration of both the adobe house and the service station, including roof repair and adobe protection and fresh exterior paint. The house is one of the only remaining exposed adobe homes in Glendale. The restored site provides lasting evidence of Glendale's heritage and history.

“An exciting project like this one represents an important part of history in Glendale, and the repairs enhance the look of this gateway entry point while preserving its past historic nature,” said Jon Froke, Glendale Planning Director in a recent press release. “Neighbors have demonstrated a strong support and appreciation for the city’s efforts to restore this historic part of Glendale.”

The adobe house was built in 1936 by Ed and Bessie Morcomb who actually used earth from the site for the bricks. The corner was known for decades to thousands of local residents as the Morcomb family owned and operated the service station and later an auto and farm equipment repair shop until 2003. Visitors and residents are welcome to visit the Myrtle Avenue Cultural Gateway, which has also become a popular stop on various historic preservation tours.

**IV. BRONZE PLAQUE PROGRAM.**

Between January and April 2013, Planning Staff have distributed over 50 letters to property owners throughout the Catlin Court Historic District regarding Glendale’s Bronze Plaque Program. This letter campaign encourages the owners of contributing properties to obtain a plaque free of charge from Planning. This program has proven to be highly successful.







### V. NATIONAL HISTORIC PRESERVATION MONTH.

At their evening meeting on April 24, 2012, the City Council proclaimed May 2013 as National Historic Preservation Month. Since 2005 the National Trust for Historic Preservation has proclaimed May as National Historic Preservation Month. The theme for 2013 is See! Save! Celebrate!

### VI. 10TH ANNUAL HISTORIC PRESERVATION TOUR.

On Saturday, May 4, 2013, Planning and the Historic Preservation Commission hosted the 10th Annual Historic Preservation Tour. The event was sponsored by the Glendale Civic Pride Ambassadors. Over fifty people attended the event, which showcases some of Glendale's most treasured landmarks and Historic Districts in Glendale.

### VII. HISTORIC PRESERVATION AWARD.

At their evening meeting on May 28, 2013, the City Council presented David Chang with the 18th Annual Ruth Byrne Historic Preservation Award. The award is named after Ruth Byrne, a Glendale native, who made significant contributions to historic preservation in the city of Glendale. Ms. Byrne has been active for decades with the Historic Preservation Commission. Since its inception in 1996 this prestigious award has been presented annually.

Mr. Chang was selected by the Historic Preservation Commission for his work associated with his investment and restoration of numerous historic buildings. These buildings are all located in Historic Downtown Glendale and issuance of the award acknowledged the achievements and dedication of Mr. Chang.

### SUMMARY:

Glendale remains committed to Historic Preservation efforts and maintains a robust program administered through the Historic Preservation Commission by the Planning Division. Glendale will continue to seek projects and initiatives that will continue to seek to honor the city's rich and deep heritage.

Please contact Mr. Froke at [jfroke@glendaleaz.com](mailto:jfroke@glendaleaz.com) or (623) 930-2585 if you have any questions about historic preservation efforts in Glendale.

