

GLENDALE

presented
by the

**Glendale Historic
Preservation
Commission**

also presented by the
**Glendale Planning
Department**

funded by the
**Glendale Civic Pride
Ambassadors**



Preserving Glendale's Heritage

The Glendale Historic Preservation Commission

The Historic Preservation Commission was approved by the City Council on July 28, 1992 and the first Commission meeting took place on July 21, 1993. The Commission consists of seven (7) members appointed by the City Council. The purpose of the Commission is to promote the preservation of historic resources. The Commission accomplishes this purpose through a historic preservation plan, public awareness, survey of potential historic resources, prepare National Register nomination designations, recommend Historic Preservation District Overlays to the Planning Commission, City Council and citizens of Glendale and other activities of restoration or rehabilitation of historic resources.

Glendale Historic Property Register

The Glendale Zoning Ordinance in Section 3.105 authorizes the recording of historic sites, structures, buildings, objects and areas, which are zoned Historic Preservation District Overlay. Owners who wish to have their property on the Glendale Historic Property Register file an application. The Historic Preservation Commission holds a public hearing and makes a recommendation to the Planning Commission. The Planning Commission holds a public hearing and makes their recommendation to City Council for the final public hearing and decision.

The Historic Preservation Ordinance has exterior design guidelines that are to be followed by property owners. Exterior changes require a review by the Historic Preservation Officer and/or the Historic Preservation Commission. Any demolition request with the district may require a one-year waiting period to allow the City to work with the property owner to save the building.

Catlin Court Historic District (residential portion) has a Historic Preservation District Overlay, but the Glendale Townsite (Commercial Area) does not have an overlay. Also, the First National Bank, Glendale Women's Club, Beet Sugar Factory, Manistee Ranch and Sahuaro Ranch have a Historic Preservation District overlay.

National Register of Historic Places

Congress created the National Register of Historic Places in 1966 as the nation's official list of

properties considered worthy of preservation. The current list of over 100,000 places includes archaeological and historic sites, buildings, districts, structures and objects of local and state historical significance.

The Arizona State Historic Preservation Act of 1982 authorizes a reduction in the property tax assessment for non-income producing properties that are on the National Register. The property owners have to apply to the County Assessor's Office for the reduction.

Income producing properties on the National Register may be aided by tax incentive provisions for rehabilitation.

There are 93 Glendale properties on the National Register. Most are located in the Glendale Townsite- Catlin Court Historic District.

Historic Preservation Commission Accomplishments

- Developed the Historic Preservation Plan adopted by the City Council.
- Invite guest speakers at monthly Historic Preservation Commission meetings
- Attend the annual statewide Historic Preservation Conference.
- Created a mobile historic preservation information kiosk.
- Created a 12-minute Manistee Ranch video.

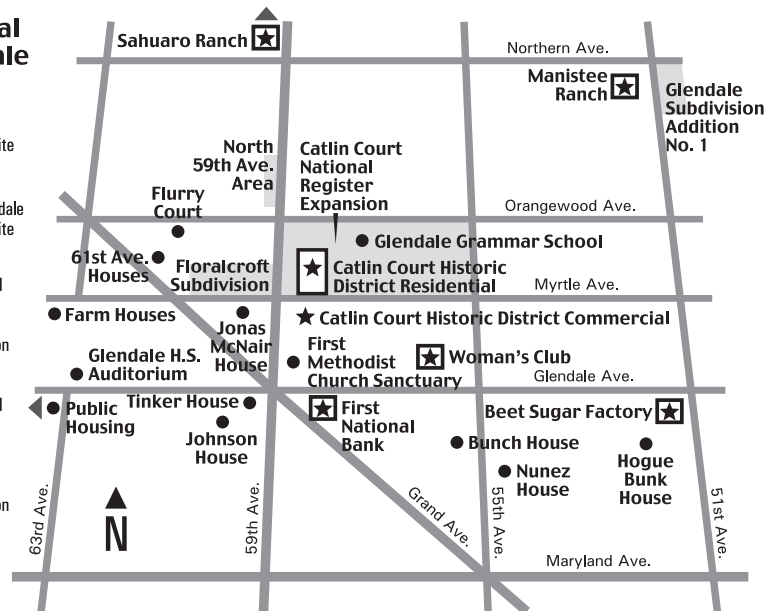
- Developed a Cultural Diversity Survey
- Listed the top 20 historic resources for national register nomination
- Held the first annual historic preservation bus tour for National preservation Week.
- Sponsor the annual Ruth Byrne Historic Preservation Award

Future Historic Preservation Commission Activities

- Submit nominations for over 100 additional historic resources on the National Register of Historic Places through 2006.
- Expand the boundaries of Catlin Court Historic District to include the area from 55th Avenue to 59th Avenue and Myrtle Avenue to Orangewood Avenue.
- Help to weatherize and stabilize twelve contributing properties in the Catlin Court Historic District through the Heritage Fund Grant.
- Survey the community for ranch house subdivisions that have retained their integrity.
- Submit a Ranch House Subdivision for National Register Nomination.
- Develop a bronze plaque recognition program of all properties on the national register
- Develop a roadside plaque program for districts and unique historic resources.
- Expand the placement of historic district street signs in new districts.
- Provide an annual historic preservation tour.

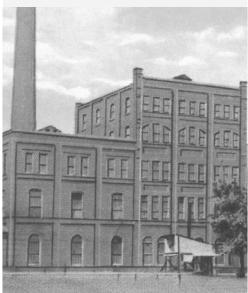
Central Glendale

- ★ National Register Site
- City of Glendale Register Site
- Proposed National Register Nomination
- Proposed National Register Historic District Nomination



Beet Sugar Factory, 1906

5243 W. Glendale Ave.
National Register, 1978



Sahuaro Ranch Guest House, 1898

9802 N. 59th Ave.
National Register, 1980



First National Bank of Glendale, 1918

6838 N. 58th Dr.
National Register, 1983



Glendale Woman's Club, 1912

7032 N. 56th Avenue
National Register, 1989



Catlin Court Historic District, 1920's +

E. of 59th Ave., Myrtle-Palmaine
National Register, 1992



Manistee Ranch House, 1897

5127 W. Northern Ave.
National Register, 1998

